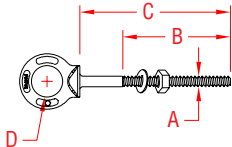


METRIC SHOULDER EYE BOLT

316-NM STAINLESS STEEL



NOTE:
MEETS ASME B30.26-2010 SECTION 26-2.0. EYE BOLTS
HAVE FORGED MARKINGS OF 316-NM, SIZE AND WLL
IN TONS. ALL THREADS ARE METRIC. ONE NUT AND
WASHER ARE INCLUDED. EXTRA NUTS AND WASHERS
ARE AVAILABLE FROM STOCK. SHAFT AND UNDERSIDE OF
SHOULDER ARE MACHINED FOR PERFECT FIT AND SEATING.

ITEM	A	B	C	D	THREAD	WLL	WT
	(size)					(lb)	(lb)
S0314-0705M	M6	1.50"	2.00"	0.50"	M6 x 1.0	500	0.06
S0314-0710M	M6	2.50"	4.00"	0.50"	M6 x 1.0	500	0.08
S0314-0803M	M8	0.38"	1.38"	0.63"	M8 x 1.25	800	0.12
S0314-0806M	M8	1.50"	2.25"	0.63"	M8 x 1.25	800	0.12
S0314-0810M	M8	2.50"	4.25"	0.63"	M8 x 1.25	800	0.14
S0314-1002M	M10	0.75"	0.75"	0.75"	M10 x 1.5	1,200	0.20
S0314-1003M	M10	1.00"	1.50"	0.75"	M10 x 1.5	1,200	0.20
S0314-1006M	M10	1.50"	2.50"	0.75"	M10 x 1.5	1,200	0.20
S0314-1012M	M10	2.50"	4.50"	0.75"	M10 x 1.5	1,200	0.26
S0314-1304M	M12	1.00"	1.50"	1.00"	M12 x 1.75	2,150	0.30
S0314-1308M	M12	1.50"	3.25"	1.00"	M12 x 1.75	2,150	0.40
S0314-1315M	M12	3.00"	6.00"	1.00"	M12 x 1.75	2,150	0.56
S0314-1603M	M16	0.75"	1.00"	1.25"	M16 x 2.0	3,440	0.60
S0314-1605M	M16	1.75"	2.00"	1.25"	M16 x 2.0	3,440	0.64
S0314-1610M	M16	2.00"	4.00"	1.25"	M16 x 2.0	3,440	0.80
S0314-1615M	M16	3.00"	6.00"	1.25"	M16 x 2.0	3,440	1.00
S0314-2003M	M18	1.00"	1.00"	1.50"	M18 x 2.5	5,140	0.94
S0314-2005M	M18	1.75"	2.00"	1.50"	M18 x 2.5	5,140	1.12
S0314-2012M	M18	2.00"	4.50"	1.50"	M18 x 2.5	5,140	1.40
S0314-2015M	M18	3.00"	6.00"	1.50"	M18 x 2.5	5,140	1.58
S0314-2213M	M20	2.50"	5.00"	1.75"	M20 x 2.5	7,130	2.32
S0314-2504M	M24	1.38"	1.38"	2.00"	M24 x 3.0	9,370	2.56
S0314-2506M	M24	2.25"	2.50"	2.00"	M24 x 3.0	9,370	2.64
S0314-2515M	M24	3.00"	6.00"	2.00"	M24 x 3.0	9,370	3.44