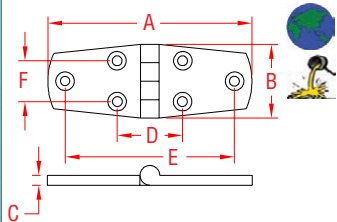


HEAVY DUTY DOOR HINGE, EQUAL

316 STAINLESS STEEL



ITEM

A

B

C

D

E

F

WT

(length)

(lb)

S3822-0075

3"

1.47"

0.19"

1.12"

2.35"

0.80"

0.21

S3822-0100

4"

1.47"

0.17"

1.34"

3.44"

0.82"

0.26

NOTE:

USE 6 #10 FASTENERS.

**HEAVY DUTY HINGE WITH PRECISION CAST COMPONENTS.
PIN IS STAINLESS AND WELDED ON ONE SIDE TO PREVENT
IT FROM WORKING LOOSE.**

**REFERENCE "FASTENER MATCHING CHART" (PAGE 159)
FOR COMPATIBLE FASTENERS.**