

YOKE END CLEVIS CLIP

316L STAINLESS STEEL



Import



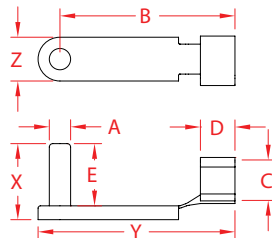
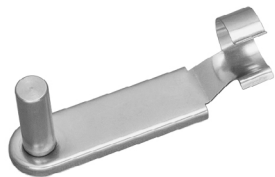
Drop Forged



Precision Machined



Stamped



ITEM	A (size)	B	C	D	E	X (height)	Y (length)	Z (width)	WT (lb)	PACKAGING TYPE	EACH (qty)	INNER (qty)	CARTON (qty)	UPC
S0113-CL05	3/16"	1.52"	0.36"	0.30"	0.54"	0.64"	1.73"	0.44"	0.01	POLYBAG	1	1	250	791506068372
S0113-CL07	1/4"	1.96"	0.47"	0.32"	0.75"	0.84"	2.19"	0.51"	0.02	POLYBAG	1	1	250	791506068389
S0113-CL08	5/16"	2.21"	0.54"	0.32"	0.90"	1.00"	2.50"	0.65"	0.03	POLYBAG	1	1	250	791506068396
S0113-CL10	3/8"	2.44"	0.67"	0.38"	1.00"	1.12"	2.76"	0.71"	0.04	POLYBAG	1	1	100	791506068402
S0113-CL13	1/2"	2.94"	0.88"	0.60"	1.30"	1.40"	3.42"	1.03"	0.10	POLYBAG	1	1	100	791506068419

NOTE:

COMPATIBLE WITH THREADED AND UNTHREADED YOKE ENDS. EASY ATTACHMENT AND REMOVAL FOR QUICK ADJUSTMENTS WITHOUT DISASSEMBLING. THESE CLIPS REDUCE THE POSSIBILITY OF LOST OR MISPLACED PINS. ALL DIMENSIONS ARE NOMINAL (+/- 3%) AND ARE SUBJECT TO CHANGE WITHOUT NOTICE.