

HOIST ANCHOR BASE

316 STAINLESS STEEL



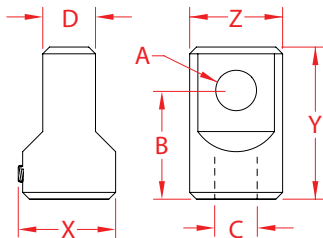
Import



Precision
Machined



Suncor
Exclusive



ITEM	A	B	C (UNC thread)	D	X (height)	Y (length)	Z (width)	WLL (lb)	WT (lb)	PACKAGING TYPE	EACH (qty)	INNER (qty)	CARTON (qty)	UPC
S0116-HB07	0.31"	1.00"	3/8"-16	0.45"	0.80"	1.38"	0.75"	1,000	0.12	POLYBAG	1	10	400	791506029779
S0116-HB08	0.38"	1.20"	7/16"-14	0.48"	0.94"	1.63"	0.88"	1,300	0.18	POLYBAG	1	5	200	791506029786
S0116-HB10	0.44"	1.50"	1/2"-13	0.60"	1.32"	2.00"	1.25"	1,500	0.46	POLYBAG	1	1	75	791506029793
S0116-HB12	0.50"	1.56"	5/8"-11	0.65"	1.42"	2.12"	1.38"	2,000	0.56	POLYBAG	1	1	50	791506029809
S0116-HB13	0.63"	1.59"	3/4"-10	0.78"	1.42"	2.25"	1.38"	3,000	0.58	POLYBAG	1	1	50	791506029816
S0116-HB16	0.75"	1.86"	7/8"-9	1.01"	1.80"	2.66"	1.74"	4,000	1.11	POLYBAG	1	1	25	791506029823
S0116-HB20	0.88"	2.00"	1"-8	1.19"	2.05"	2.87"	2.00"	6,000	1.54	POLYBAG	1	1	20	791506029830
S0116-HB22	1.00"	2.34"	1-1/8"-7	1.39"	2.52"	3.50"	2.50"	8,000	3.00	POLYBAG	1	1	10	791506029847
S0116-HB25	1.13"	2.67"	1-1/4"-7	1.60"	2.75"	4.00"	2.75"	10,000	4.23	POLYBAG	1	1	5	791506029854

NOTE:

316 STAINLESS STEEL FOR MAXIMUM CORROSION RESISTANCE. DESIGNED FOR USE WITH STANDARD SHACKLE TYPES AND SIZES. ALL DIMENSIONS ARE NOMINAL (+/- 3%) AND ARE SUBJECT TO CHANGE WITHOUT NOTICE.