

# CHAIR CLIP

## 316-NM STAINLESS STEEL



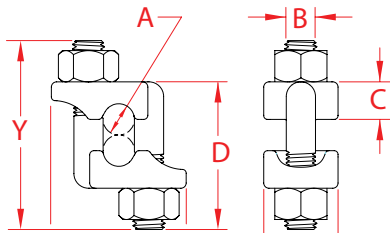
Import



Precision  
Cast



Suncor  
Exclusive



ITEM	A (size)	B	C	D	X (height)	Y (length)	Z (width)	WT (lb)	PACKAGING TYPE	EACH (qty)	INNER (qty)	CARTON (qty)	UPC
S0122-C007	1/4"	0.36"	0.35"	1.38"	0.95"	2.00"	1.54"	0.25	POLYBAG	1	10	150	791506031239
S0122-C008	5/16"	0.38"	0.45"	1.63"	1.06"	2.43"	1.72"	0.33	POLYBAG	1	10	120	791506031246
S0122-C010	3/8"	0.43"	0.50"	1.78"	1.05"	2.40"	1.95"	0.42	POLYBAG	1	10	100	791506031253
S0122-C013	1/2"	0.50"	0.52"	2.13"	1.25"	3.25"	2.20"	0.62	POLYBAG	1	1	60	791506031260
S0122-C016	5/8"	0.62"	0.69"	3.30"	1.51"	5.38"	2.75"	1.29	POLYBAG	1	1	30	791506031277
S0122-C020	3/4"	0.75"	0.90"	3.34"	1.76"	4.17"	3.38"	1.82	POLYBAG	1	1	20	791506031284

**NOTE:**  
**I/A/W FEDERAL SPECIFICATION FF-C-450D, TYPE 3, CLASS 1. (EXCEPT 316 STAINLESS AND CAST)**  
**ALL DIMENSIONS ARE NOMINAL (+/- 3%) AND ARE SUBJECT TO CHANGE WITHOUT NOTICE.**