

“D” RING

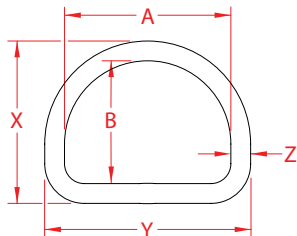
316 STAINLESS STEEL



Import



Wire
Formed



ITEM	A	B	X (height)	Y (length)	Z (width)	WLL (lb)	WT (lb)	PACKAGING TYPE	EACH (qty)	INNER (qty)	CARTON (qty)	UPC
S0139-X325	1.25"	0.88"	1.15"	1.50"	0.13"	100	0.01	POLYBAG	1	200	3,000	791506033271
S0139-X525	1.38"	1.06"	1.48"	1.77"	0.19"	300	0.04	POLYBAG	1	100	1,000	791506033288
S0139-X540	1.80"	1.31"	1.70"	2.25"	0.19"	300	0.05	POLYBAG	1	50	750	791506033295
S0139-X625	1.50"	1.25"	1.75"	2.00"	0.25"	500	0.06	POLYBAG	1	50	500	791506033301
S0139-X640*	2.00"	1.50"	1.95"	2.45"	0.25"	500	0.08	POLYBAG	1	50	500	791506033318
S0139-X650	2.50"	1.75"	2.20"	2.95"	0.25"	500	0.10	POLYBAG	1	50	400	791506033325
S0139-X850	2.60"	1.94"	2.56"	3.29"	0.31"	800	0.18	POLYBAG	1	25	200	791506033332
S0139-X865	3.00"	2.19"	2.81"	3.75"	0.31"	800	0.22	POLYBAG	1	25	200	791506033349
S0139-X875	3.55"	2.40"	3.05"	4.25"	0.31"	800	0.24	POLYBAG	1	25	150	791506033356

NOTE:
MEETS THE REQUIREMENTS OF: MIL-DTL-32655 (*EXCLUDING S0139-X640).
WORKING LOADS ARE BASED ON “C” LENGTH BEING USED IN FULL BY WEBBING, AND NOT UNDER POINT OR SHOCK LOAD.
ALL DIMENSIONS ARE NOMINAL (+/- 3%) AND ARE SUBJECT TO CHANGE WITHOUT NOTICE.