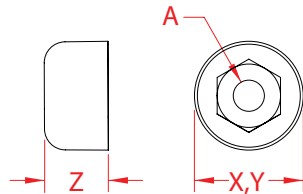


# COVER NUT SET, UNF THREAD 316 STAINLESS STEEL



Import



Precision  
Machined



Suncor  
Exclusive

ITEM	A (size)	X (height)	Y (length)	Z (width)	WT (lb)	PACKAGING TYPE	EACH (qty)	INNER (qty)	CARTON (qty)	UPC
S0307-UF07-L	1/4"	0.75"	0.75"	0.40"	0.04	POLYBAG	1	10	1,000	791506307020
S0307-UF07-R	1/4"	0.75"	0.75"	0.40"	0.04	POLYBAG	1	10	1,000	791506307013

**NOTE:**  
**DESIGNED FOR USE WITH HAND SWAGE AND STANDARD STUDS. COVER NUT SET IS PERFECT FOR CABLE RAILING SYSTEMS WHERE "THROUGH POST" HARDWARE IS DESIRED FOR MINIMAL OBSTRUCTION.**  
**AFFIX TO END OF SWAGE STUD FOR A FINISHED LOOK.**  
**ALL DIMENSIONS ARE NOMINAL (+/- 3%) AND ARE SUBJECT TO CHANGE WITHOUT NOTICE.**