

# METRIC LIFTING EYE NUT

## 316-NM STAINLESS STEEL



Import



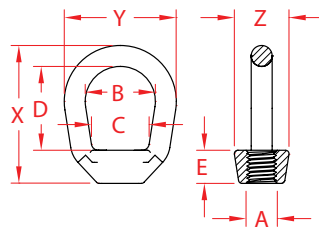
Drop Forged



Load Rated



Suncor Exclusive



ITEM	A (size)	B	C	D	E	X (height)	Y (length)	Z (width)	WLL (lb)	WT (lb)	PACKAGING TYPE	EACH (qty)	INNER (qty)	CARTON (qty)	UPC
S0322-M007	M6	0.75"	0.59"	1.06"	0.38"	1.70"	1.26"	0.58"	460	0.08	POLYBAG	1	10	200	791506041771
S0322-M008	M8	0.75"	0.59"	1.06"	0.38"	1.70"	1.26"	0.58"	780	0.08	POLYBAG	1	10	100	791506041788
S0322-M010	M10	1.25"	1.00"	1.50"	0.63"	2.50"	2.00"	0.93"	1,160	0.31	POLYBAG	1	10	100	791506041795
S0322-M013	M12	1.25"	1.00"	1.50"	0.63"	2.50"	2.00"	0.93"	2,150	0.27	POLYBAG	1	1	50	791506041801
S0322-M016	M16	1.50"	1.19"	2.00"	0.69"	3.18"	2.50"	1.15"	3,440	0.59	POLYBAG	1	1	20	791506041818
S0322-M020	M18	1.75"	1.25"	2.38"	0.88"	3.82"	3.00"	1.30"	5,140	0.97	POLYBAG	1	1	10	791506041825

**NOTE:**  
**MEETS ASME B30.26-2010 SECTION 26-2.0. UNDERSIDE OF SHOULDER IS MACHINED FOR PERFECT SEATING.**  
**EYE NUTS HAVE FORGED MARKINGS OF 316-NM, SIZE AND WLL IN TONS. ALL THREADS ARE "METRIC".**  
**ALL DIMENSIONS ARE NOMINAL (+/- 3%) AND ARE SUBJECT TO CHANGE WITHOUT NOTICE.**