

ROD END BLANK

304 STAINLESS STEEL



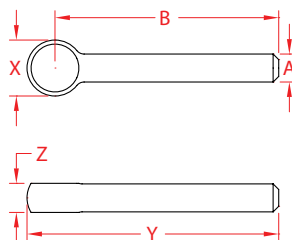
Import



Drop
Forged



Precision
Machined



ITEM	A (size)	B	X (height)	Y (length)	Z (width)	WT (lb)	PACKAGING TYPE	EACH (qty)	INNER (qty)	CARTON (qty)	UPC
S0360-10075	3/8"	3.00"	0.75"	3.38"	0.38"	0.12	POLYBAG	1	1	50	791506043300
S0360-10100	3/8"	4.00"	0.75"	4.38"	0.38"	0.15	POLYBAG	1	1	50	791506043317
S0360-13100	1/2"	4.00"	1.00"	4.50"	0.50"	0.30	POLYBAG	1	1	50	791506043324
S0360-13125	1/2"	5.00"	1.00"	5.50"	0.50"	0.35	POLYBAG	1	1	50	791506043331
S0360-13150	1/2"	6.00"	1.00"	6.50"	0.50"	0.41	POLYBAG	1	1	50	791506043348
S0360-16125	5/8"	5.00"	1.25"	5.63"	0.63"	0.58	POLYBAG	1	1	20	791506043355
S0360-16150	5/8"	6.00"	1.25"	6.63"	0.63"	0.67	POLYBAG	1	1	20	791506043362
S0360-16200	5/8"	8.00"	1.25"	8.63"	0.63"	0.82	POLYBAG	1	1	20	791506043379
S0360-20125	3/4"	5.00"	1.50"	5.75"	0.75"	0.93	POLYBAG	1	1	10	791506043386
S0360-20150	3/4"	6.00"	1.50"	6.75"	0.75"	1.03	POLYBAG	1	1	10	791506043393
S0360-20175	3/4"	7.00"	1.50"	7.75"	0.75"	1.13	POLYBAG	1	1	10	791506043409
S0360-20200	3/4"	8.00"	1.50"	8.75"	0.75"	1.25	POLYBAG	1	1	10	791506043416
S0360-22150	7/8"	6.00"	1.75"	6.88"	0.88"	1.40	POLYBAG	1	1	10	791506043423
S0360-25300	1"	10.00"	2.00"	11.00"	1.00"	2.90	POLYBAG	1	1	10	791506043430

NOTE:
ALL DIMENSIONS ARE NOMINAL (+/- 3%) AND ARE SUBJECT TO CHANGE WITHOUT NOTICE.