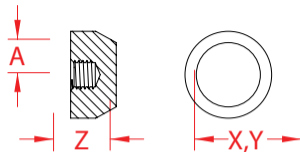
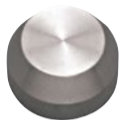


STOP NUT, UNC THREAD 316 STAINLESS STEEL



Import



Precision
Machined

ITEM	A (size)	X (height)	Y (length)	Z (width)	WT (lb)	PACKAGING TYPE	EACH (qty)	INNER (qty)	CARTON (qty)	UPC
S0724-UN07-L	1/4"	0.75"	0.75"	0.40"	0.03	POLYBAG	1	100	1,000	791506048930
S0724-UN07-R	1/4"	0.75"	0.75"	0.40"	0.03	POLYBAG	1	100	1,000	791506048947

NOTE:
DESIGNED FOR USE WITH HAND SWAGE AND STANDARD STUDS. STOP NUT IS PERFECT FOR CABLE RAILING SYSTEMS WHERE "THROUGH POST" HARDWARE IS DESIRED FOR MINIMAL OBSTRUCTION.
USE AT THE END OF SWAGE STUDS FOR A FINISHED LOOK.
ALL DIMENSIONS ARE NOMINAL (+/- 3%) AND ARE SUBJECT TO CHANGE WITHOUT NOTICE.