

90 DEGREE DECK HINGE

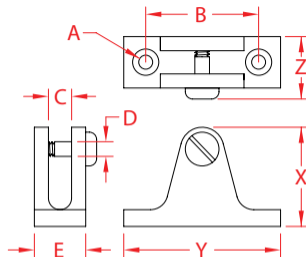
316 STAINLESS STEEL



Import



Precision
Cast



ITEM	A	B	C	D	E	FASTENERS	X (height)	Y (length)	Z (width)	WT (lb)	PACKAGING TYPE	EACH (qty)	INNER (qty)	CARTON (qty)	UPC
S3682-2000	0.20"	1.62"	0.30"	0.21"	0.73"	(2) #10	1.34"	2.25"	0.68"	0.16	POLYBAG	1	5	200	791506057109

NOTE:
ALL DIMENSIONS ARE NOMINAL (+/- 3%) AND ARE SUBJECT TO CHANGE WITHOUT NOTICE.