

# CONCAVE DECK HINGE

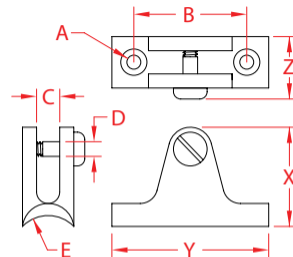
316 STAINLESS STEEL



Import



Precision  
Cast



ITEM	A	B	C	D	E	FASTENERS	X (height)	Y (length)	Z (width)	WT (lb)	PACKAGING TYPE	EACH (qty)	INNER (qty)	CARTON (qty)	UPC
S3682-3000	0.20"	1.62"	0.30"	0.21"	0.87"	(2) #10	1.55"	2.25"	0.80"	0.19	POLYBAG	1	5	175	791506057116

**NOTE:**  
**ALL DIMENSIONS ARE NOMINAL (+/- 3%) AND ARE SUBJECT TO CHANGE WITHOUT NOTICE.**