



## **FOR IMMEDIATE RELEASE**

Contact:

Carey Greenway

Marketing Manager

Suncor Stainless, Inc.

Direct: (508) 732-1025

Fax: (508) 732-9798

[www.suncorstainless.com](http://www.suncorstainless.com)

[carey@suncorstainless.com](mailto:carey@suncorstainless.com)

## **New Line of Heavy Duty Thimbles**

### **Suncor Stainless Has Expanded Their Selection of Stainless Steel Thimbles**

Plymouth, MA – November 6, 2013 – Suncor Stainless, Inc. has added to their already expansive line of stainless steel thimbles. With this new heavy duty thimble, Suncor can now comfortably say that they can satisfy all their customers' needs and requirements for stainless steel thimbles.

"Our customers have voiced a need for a heavy duty thimble with certain dimensions and performance attributes," says David Morgan, Vice President of Sales and Marketing at Suncor Stainless. "We can't satisfy our customers' needs when we don't have the product. After extensive research and testing, we manufactured a thimble which fills that void." This new thimble is made from grade 316 stainless steel for maximum corrosion resistance and durability. The sizes range from 3/16" to 1-1/4", making it ideal for various large and small rigging applications.

Suncor Stainless has a network of dealers throughout the United States and Canada that offer these heavy duty thimbles and other quality marine and industrial hardware. Please contact a Suncor sales representative to find a dealer near you. To learn more about these hooks or other Suncor Stainless products, please visit [www.suncorstainless.com](http://www.suncorstainless.com) or call (800) 394-2222.

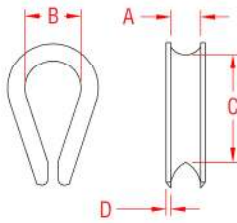
Suncor Stainless, Inc. is a leading manufacturer for stainless steel hardware in the industrial, marine, government, architectural, OEM and commercial industries. Suncor's modern facilities manufacture the highest quality stainless steel chain, wire rope assemblies and custom parts. The in-house capabilities include a product development staff whose tireless efforts, along with valuable input from clients, work to continuously improve and perfect their ever-expanding product line.

###

## HEAVY DUTY THIMBLE



316 STAINLESS STEEL



| ITEM       | SIZE           | A     | B     | C     | D     | WT   |
|------------|----------------|-------|-------|-------|-------|------|
| S0127-0005 | 3/16"          | 0.24" | 0.75" | 1.46" | 0.05" | 0.03 |
| S0127-0007 | 1/4"           | 0.28" | 0.88" | 1.71" | 0.07" | 0.07 |
| S0127-0008 | 5/16"          | 0.34" | 1.06" | 1.97" | 0.07" | 0.12 |
| S0127-0010 | 3/8"           | 0.41" | 1.14" | 2.25" | 0.10" | 0.22 |
| S0127-0012 | 7/16"          | 0.47" | 1.26" | 2.50" | 0.11" | 0.35 |
| S0127-0013 | 1/2"           | 0.53" | 1.50" | 2.92" | 0.13" | 0.51 |
| S0127-0014 | 9/16"          | 0.60" | 1.50" | 2.92" | 0.13" | 0.52 |
| S0127-0016 | 5/8"           | 0.67" | 1.75" | 3.41" | 0.14" | 0.76 |
| S0127-0020 | 3/4"           | 0.79" | 2.00" | 3.98" | 0.22" | 1.58 |
| S0127-0022 | 7/8"           | 0.94" | 2.24" | 4.48" | 0.22" | 1.78 |
| S0127-0025 | 1"             | 1.06" | 2.50" | 4.72" | 0.22" | 3.14 |
| S0127-0032 | 1-1/8"- 1-1/4" | 1.31" | 2.88" | 5.34" | 0.22" | 4.00 |

**NOTE: HEAVY DUTY VERSION.**