



FOR IMMEDIATE RELEASE

Contact:

Carey Greenway

Marketing Manager

Suncor Stainless, Inc.

Direct: (508) 732-1025

Fax: (508) 732-9798

www.suncorstainless.com

carey@suncorstainless.com

Demanding Tie-Downs: There's No Substitute for a Secure Design

Secure Your Next Load with Suncor's New Heavy-Duty Lashing Rings

Plymouth, MA – October 1, 2013 – Suncor Stainless, Inc. has designed a new set of heavy-duty lashing rings for demanding tie-down applications. These 2-part components feature a "D" ring with either a weld-on or bolt-on mounting plate. The plate provides flexibility in placement, allowing Suncor's customers to have convenient access points for their specific application.

"We offer a variety of tie-down products, usually involving webbing with ratchet buckles and a various hooks or clips," says Patrick Striebel, President of Suncor Stainless. "We wanted to develop more of a heavy-duty product for our customers who require larger working load limits." These lashing rings range in size from 1/2" to 1" and are drop forged to provide the strength needed for challenging applications. They are made from grade 316 stainless steel for maximum corrosion resistance and durability, making them ideal for applications such as overseas container shipments or long distance hauling in exposed elements. The rings are available in a bolt-on or weld-on style for easy and convenient final placement. They can be folded flush when not in use. Working load limits range from 3,000 lbs. to 8,500 lbs.

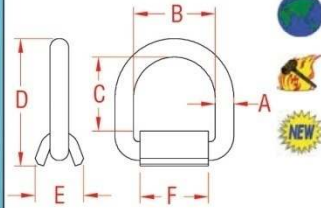
Suncor Stainless has a network of dealers throughout the United States and Canada that offer these lashing rings and other quality marine and industrial hardware. Please contact a Suncor sales representative to find a dealer near you. To learn more about Suncor's products, please visit www.suncorstainless.com or call (800) 394-2222.

Suncor Stainless, Inc. is a leading manufacturer for stainless steel hardware in the industrial, marine, government, architectural, OEM and commercial industries. Suncor's modern facilities manufacture the highest quality stainless

steel chain, wire rope assemblies and custom parts. The in-house capabilities include a product development staff whose tireless efforts, along with valuable input from clients, work to continuously improve and perfect their ever-expanding product line.

###

LASHING RING - "WELD-ON"
316 STAINLESS STEEL



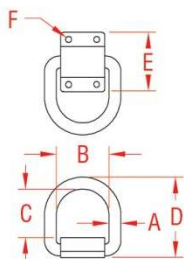
ITEM	A	B	C	D	E	F	WLL	WT
	(size)						(lb)	(lb)
S3722-0013	1/2"	2.35"	2.12"	3.65"	1.38"	1.96"	*3,000	1.00
S3722-0016	5/8"	2.94"	2.55"	4.48"	1.75"	2.56"	*4,500	2.18
S3722-0020	3/4"	2.98"	2.58"	4.63"	1.89"	2.56"	*6,500	2.53
S3722-0025	1"	3.00"	2.52"	5.14"	2.14"	2.56"	*8,500	4.47

NOTE: HEAVY DUTY LASHING RING IS DESIGNED FOR DEMANDING TIE-DOWN APPLICATIONS. "D" RING IS FORGED 316 STAINLESS STEEL AND FOLDS FLUSH WHEN NOT IN USE. FEATURES WELD-ON MOUNTING PLATE. IDEAL FOR CARGO APPLICATIONS SUCH AS OVERSEAS CONTAINER SHIPMENTS OR LONG DISTANCE HAULING IN EXPOSED ELEMENTS.

*WORKING LOAD LIMIT DEPENDS ON THE QUALITY OF THE WELD ATTACHING THE BASE.

FORGED

LASHING RING - "BOLT-ON"
316 STAINLESS STEEL



ITEM	A	B	C	D	E	F	BOLT	WLL	WT
	(size)						(diameter)	(lb)	(lb)
S3723-0013	1/2"	2.35"	2.14"	3.56"	2.63"	0.34"	5/16"	3,000	1.18
S3723-0016	5/8"	2.94"	2.61"	4.42"	2.75"	0.41"	3/8"	4,500	2.25
S3723-0020	3/4"	2.98"	2.58"	4.56"	3.19"	0.41"	3/8"	6,500	3.00
S3723-0025	1"	3.00"	2.52"	5.17"	4.25"	0.53"	1/2"	8,500	5.18

NOTE: HEAVY DUTY LASHING RING IS DESIGNED FOR DEMANDING TIE-DOWN APPLICATIONS. "D" RING IS FORGED 316 STAINLESS STEEL AND FOLDS FLUSH WHEN NOT IN USE. FEATURES BOLT-ON MOUNTING PLATE. IDEAL FOR CARGO APPLICATIONS SUCH AS OVERSEAS CONTAINER SHIPMENTS OR LONG DISTANCE HAULING IN EXPOSED ELEMENTS.

FORGED