

YOKE END THREADED, UNC

316-NM STAINLESS STEEL



Import



Drop Forged



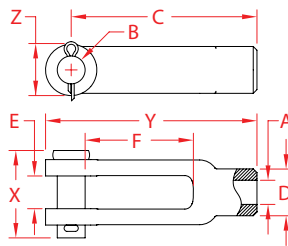
Precision Machined



Load Rated



Suncor Exclusive



ITEM	A (size)	B	C	D	E	F	X (height)	Y (length)	Z (width)	WLL (lb)	WT (lb)	PACKAGING TYPE	EACH (qty)	INNER (qty)	CARTON (qty)	UPC
S0113-RC05	3/16"	0.19"	1.56"	0.31"	0.19"	0.89"	0.68"	1.81"	0.39"	300	0.04	POLYBAG	1	10	500	791506028505
S0113-RC07	1/4"	0.25"	2.00"	0.44"	0.29"	1.08"	0.92"	2.32"	0.53"	500	0.10	POLYBAG	1	10	400	791506028512
S0113-RC08	5/16"	0.31"	2.25"	0.50"	0.33"	1.26"	1.11"	2.57"	0.64"	800	0.14	POLYBAG	1	5	200	791506028529
S0113-RC10	3/8"	0.38"	2.50"	0.63"	0.44"	1.46"	1.30"	2.96"	0.71"	1,200	0.24	POLYBAG	1	10	150	791506028536
S0113-RC13	1/2"	0.50"	3.00"	0.81"	0.58"	1.65"	1.58"	3.50"	0.97"	2,200	0.50	POLYBAG	1	10	80	791506028543
S0113-RC16	5/8"	0.63"	4.94"	1.06"	0.70"	3.37"	1.92"	5.54"	1.15"	3,500	1.14	POLYBAG	1	5	30	791506028550
S0113-RC20	3/4"	0.75"	6.06"	1.25"	0.79"	4.25"	2.24"	6.77"	1.44"	5,200	2.06	POLYBAG	1	1	20	791506028567
S0113-RC25	1"	0.97"	8.00"	1.63"	1.06"	5.52"	2.97"	8.97"	1.94"	8,000	4.32	POLYBAG	1	1	5	791506088035

NOTE:
SOLD WITH CLEVIS PINS. "UNC" RIGHT HAND THREADED.
ALL DIMENSIONS ARE NOMINAL (+/- 3%) AND ARE SUBJECT TO CHANGE WITHOUT NOTICE.