

# SURFACE MOUNT BLOCK (WIRE)

## 304/316 STAINLESS STEEL



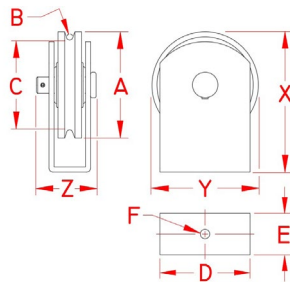
Import



Precision  
Cast



Suncor  
Exclusive



ITEM	A	B (wire size)	C	D	E	F (fastener)	X (height)	Y (length)	Z (width)	WLL (lb)	WT (lb)	SHEAVE	TYPE	PACKAGING TYPE	EACH (qty)	INNER (qty)	CARTON (qty)	UPC
S0421-0050-W	2.25"	3/32" + 1/8"	1.88"	2.00"	1.14"	3/16"	3.25"	2.25"	1.67"	1,000	0.98	S0412-0310	TYPE "U"	POLYBAG	1	1	50	791506044635
S0421-0075-W	3.25"	3/16"	2.75"	2.75"	1.27"	1/4"	4.30"	3.25"	1.82"	2,000	2.01	S0412-0513	TYPE "U"	POLYBAG	1	1	25	791506044659
S0421-0100-W	4.25"	1/4"	3.50"	3.88"	1.50"	3/8"	5.69"	4.25"	2.19"	3,000	4.25	S0412-0716	TYPE "U"	POLYBAG	1	1	10	791506044673

**NOTE: SHEAVE IS PRECISION CAST AND FITTED WITH BRONZE BUSH. REMOVABLE SHEAVE.  
REFERENCE "FASTENER MATCHING CHART" FOR COMPATIBLE FASTENERS.  
ALL DIMENSIONS ARE NOMINAL (+/- 3%) AND ARE SUBJECT TO CHANGE WITHOUT NOTICE.**