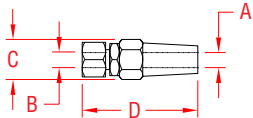


QUICK ATTACH™ RECEIVER

316 STAINLESS STEEL



ITEM

A

B

C

D

WT

(wire size)

(thread)

(lb)

S0770-0703

1/8"

1/4"

0.54"

1.46"

0.07

S0770-0704

5/32"

1/4"

0.63"

1.68"

0.12

S0770-0905

3/16"

5/16"

0.75"

2.02"

0.18

S0770-1007

1/4"

3/8"

0.84"

2.50"

0.28

S0770-1610

3/8"

5/8"

1.06"

3.62"

0.60

S0770-2013

1/2"

3/4"

1.25"

4.32"

0.96

NOTE:

MECHANICAL SWAGE FITTING ALLOWS VERY FAST AND SIMPLE ATTACHMENT USING A BOLT OR STUD THROUGH A PLATE. WLL IS DETERMINED BY WLL OF WIRE USED. FOR USE WITH BOLTS OR SIMILAR FASTENERS.