

# MIL. SPEC SINGLE SHANK BALL

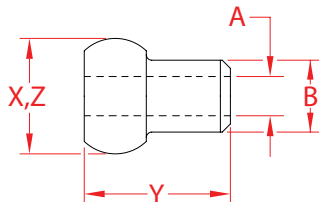
## STAINLESS STEEL



Made in  
USA



Precision  
Machined



ITEM	A (wire)	B BEFORE (swage)	B AFTER (swage)	BALL BEFORE (swage)	BALL AFTER (swage)	X (height)	Y (length)	Z (width)	WT (lb)	PACKAGING TYPE	EACH (qty)	INNER (qty)	CARTON (qty)	UPC
MS20664C2	1/16"	0.132"	0.112"	0.212"	0.190"	0.21"	0.27"	0.21"	0.01/100	POLYBAG	1	10	1,000	791506019190
MS20664C3	3/32"	0.168"	0.143"	0.282"	0.253"	0.28"	0.38"	0.28"	0.01/100	POLYBAG	1	10	1,000	791506019206
MS20664C4	1/8"	0.223"	0.190"	0.350"	0.315"	0.35"	0.50"	0.35"	0.6/100	POLYBAG	1	10	1,000	791506019213
MS20664C5	5/32"	0.259"	0.222"	0.424"	0.379"	0.42"	0.62"	0.42"	0.01	POLYBAG	1	10	1,000	791506019220
MS20664C6	3/16"	0.298"	0.255"	0.492"	0.442"	0.49"	0.73"	0.49"	0.01	POLYBAG	1	10	500	791506019237
MS20664C7	7/32"	0.352"	0.302"	0.560"	0.505"	0.56"	0.85"	0.56"	0.02	POLYBAG	1	10	500	791506019244
MS20664C8	1/4"	0.406"	0.348"	0.629"	0.567"	0.63"	0.96"	0.63"	0.03	POLYBAG	1	10	300	791506019251
MS20664C10	5/16"	0.480"	0.413"	0.768"	0.694"	0.77"	1.19"	0.77"	0.05	POLYBAG	1	5	200	791506019183

**NOTE:**  
**THESE FITTINGS MEET MIL SPEC #MS20664 AND HAVE MET ALL QUALITY AND TESTING REQUIREMENTS PER MIL-DTL-781  
 AND ARE APPROVED FOR LISTING IN QPL-781. MACHINE SWAGE ONLY.**