

RIVET NUT INSERT

316 STAINLESS STEEL



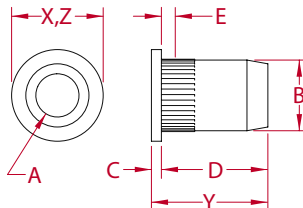
Import



Stamped



Suncor
Exclusive



ITEM	A	B	C	D	E	X (height)	Y (length)	Z (width)	WT (lb)	PACKAGING TYPE	EACH (qty)	INNER (qty)	CARTON (qty)	UPC
UNF, RIGHT AND LEFT HAND														
S0381-0007	1/4"	0.35"	0.06"	0.58"	0.14"	0.43"	0.64"	0.43"	0.01	POLYBAG	1	25	4,000	791506043867
S0381-L007	1/4"	0.35"	0.06"	0.58"	0.14"	0.43"	0.64"	0.43"	0.01	POLYBAG	1	25	4,000	791506043874
UNC, RIGHT AND LEFT HAND														
S0382-0005	3/16"	0.27"	0.04"	0.48"	0.12"	0.35"	0.52"	0.35"	0.01	POLYBAG	1	50	8,000	791506043881
S0382-0007	1/4"	0.35"	0.06"	0.58"	0.14"	0.43"	0.63"	0.43"	0.01	POLYBAG	1	25	4,000	791506043898
S0382-L007	1/4"	0.35"	0.06"	0.58"	0.14"	0.43"	0.64"	0.43"	0.01	POLYBAG	1	25	4,000	791506043928
S0382-0008	5/16"	0.43"	0.06"	0.64"	0.16"	0.55"	0.69"	0.55"	0.01	POLYBAG	1	25	2,500	791506043904
S0382-0010	3/8"	0.50"	0.06"	0.84"	0.22"	0.63"	0.90"	0.63"	0.02	POLYBAG	1	10	1,500	791506043911

NOTE:
FOR INSTALLATION IN THIN WALL METAL PLATES OR TUBES. RIVET NUT INSTALLATION TOOL IS ITEM #S0380-0000.
ALL DIMENSIONS ARE NOMINAL (+/- 3%) AND ARE SUBJECT TO CHANGE WITHOUT NOTICE.