



# HiLOAD WIRE ROPE SHEAVE, BUSHING

## 316 STAINLESS STEEL / BRONZE



Import



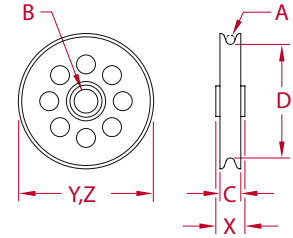
Precision  
Cast



Suncor  
Exclusive



New  
Product



ITEM	A (wire size)	B	C	D	X (height)	Y (length)	Z (width)	SPACER (part #)	WLL (lb)	WT (lb)
S0418-0307*	1/8"	0.25"	0.39"	1.64"	0.46"	2.00"	2.00"	P0414-SPC01	500	0.14
S0418-0310	1/8"	0.38"	0.39"	1.64"	0.44"	2.00"	2.00"	N/A	500	0.13
S0418-0510*	3/16"	0.38"	0.63"	2.42"	0.71"	3.00"	3.00"	P0414-SPC03	1,500	0.54
S0418-0513*	3/16"	0.50"	0.63"	2.42"	0.71"	3.00"	3.00"	P0414-SPC07	1,500	0.53
S0418-0516	3/16"	0.63"	0.63"	2.42"	0.69"	3.00"	3.00"	N/A	1,500	0.51
S0418-0713*	1/4"	0.50"	0.77"	3.28"	0.86"	4.00"	4.00"	P0414-SPC04	2,000	1.05
S0418-0716*	1/4"	0.63"	0.77"	3.28"	0.86"	4.00"	4.00"	P0414-SPC10	2,000	1.02
S0418-0720*	1/4"	0.75"	0.77"	3.28"	0.86"	4.00"	4.00"	P0414-SPC09	2,000	0.99
S0418-0722	1/4"	0.88"	0.77"	3.28"	0.84"	4.00"	4.00"	N/A	2,000	0.95
S0418-0813*	5/16"	0.50"	0.77"	4.20"	0.86"	5.00"	5.00"	P0414-SPC04	3,000	1.51
S0418-0816*	5/16"	0.63"	0.77"	4.20"	0.86"	5.00"	5.00"	P0414-SPC10	3,000	1.48
S0418-0820*	5/16"	0.75"	0.77"	4.20"	0.86"	5.00"	5.00"	P0414-SPC09	3,000	1.45
S0418-0822	5/16"	0.88"	0.77"	4.20"	0.84"	5.00"	5.00"	N/A	3,000	1.41
S0418-1016*	3/8"	0.63"	0.92"	5.00"	1.02"	6.00"	6.00"	P0414-SPC05	4,000	2.52
S0418-1020*	3/8"	0.75"	0.92"	5.00"	1.02"	6.00"	6.00"	P0414-SPC12	4,000	2.48
S0418-1022*	3/8"	0.88"	0.92"	5.00"	1.02"	6.00"	6.00"	P0414-SPC11	4,000	2.43
S0418-1028	3/8"	1.13"	0.92"	5.00"	1.00"	6.00"	6.00"	N/A	4,000	2.32

**\*INCLUDES SPACER**

**NOTE: ALL DIMENSIONS ARE NOMINAL (+/- 3%) AND ARE SUBJECT TO CHANGE WITHOUT NOTICE.**