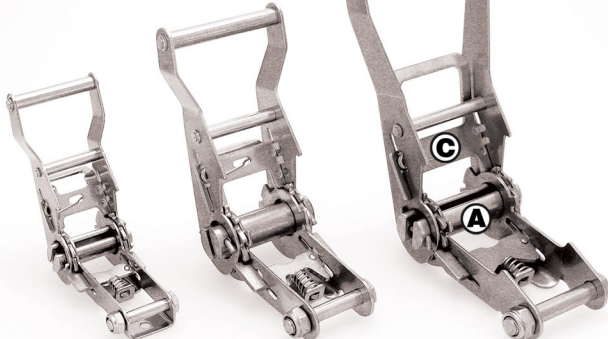


# "WIDE GRIP" RATCHET ASSEMBLY INSTRUCTIONS

## COMPONENT KEY:

- A = Webbing Slot  
B = Ratchet Handle  
C = Release Tab



S0202-WG25

S0206-WG38

S0208-WG50

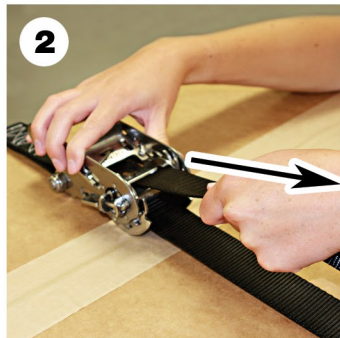
## ⚠ WARNING

- 1. READ ALL WARNINGS & INSTRUCTIONS BEFORE USING THIS PRODUCT.**  
Failure to read all warnings and instructions before use of this product may result in serious injury or death.
- 2. NEVER** exceed the working load limit of the ratchet assembly.
- Inspect entire assembly before each use. **DO NOT** use ratchet if any parts are loose, bent or crooked. Webbing **SHOULD NOT BE USED** if any signs of abrasion, burning, melting, cuts, fraying, tears, knots, damaged sew patterns, or alterations are present.
- Hardware must be pulled in a straight line or performance strength will be reduced. Hardware **SHOULD NOT BE USED** if any signs of damage, deformation, or alterations are present.
- 5. ALWAYS** protect webbing from sharp edges or abrasive surfaces.
- Ratchet assemblies are **NOT TO BE USED** for lifting, overhead lifting, or towing of any kind.
- 7. DO NOT** leave webbing out in sunlight or foul weather. Storing ratchet assembly in a dry location out of sunlight will ensure years of service.

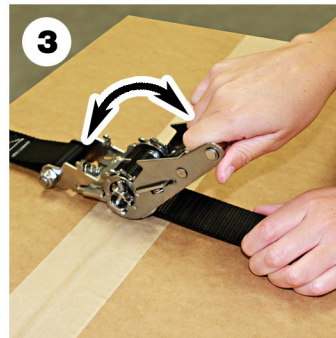
## RATCHET ASSEMBLY "HOW TO" - THREADING & TENSIONING



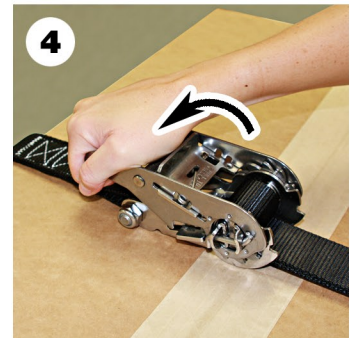
- 1.** To thread ratchet buckle, place the long unattached strap end **THROUGH** webbing slot (A) in center of closed ratchet.



- 2.** Pull attachment side of webbing through the slot. There must be a minimum length of 1"-inch or assembly to function properly.



- 3.** Start ratcheting (raising and lowering ratchet handle, B), while applying slight pressure.

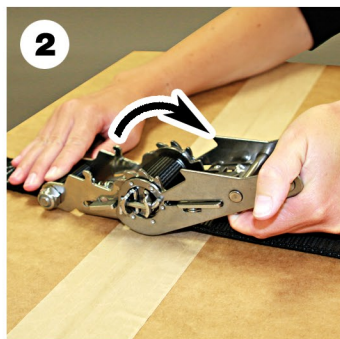


- 4.** Webbing will wind itself and be locked in place so that further ratcheting will rapidly increase tension in strap. Close ratchet fully when finished.

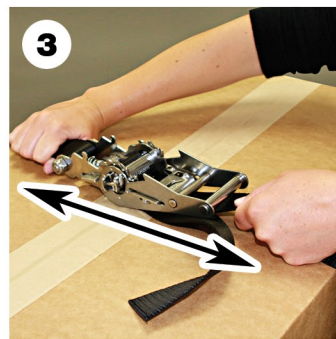
## RATCHET ASSEMBLY "HOW TO" - BUCKLE RELEASE



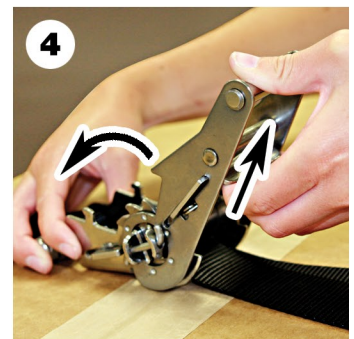
- 1.** To release webbing, pull and hold release tab (C) on top of assembly to override ratcheting function.



- 2.** Open ratchet until it is flat and both assemblies are in-line. The top assembly will click into place and hold open.



- 3.** Grab webbing from non-fixed side and pull to release webbing.



- 4.** Pull and hold release tab on top assembly to release from open position. Close ratchet fully.