

HEAVY DUTY FOLDING PAD EYE

316 STAINLESS STEEL



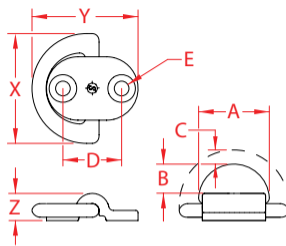
Import



Drop
Forged



Suncor
Exclusive



| ITEM | A | B | C | D | E | FASTENER | X (height) | Y (length) | Z (width) | WLL (lb) | WT (lb) | PACKAGING TYPE | EACH (qty) | INNER (qty) | CARTON (qty) | UPC |
|------------|-------|-------|-------|-------|-------|----------|---------------|---------------|--------------|-------------|------------|-------------------|---------------|----------------|-----------------|--------------|
| S3712-0001 | 1.10" | 0.50" | 0.25" | 0.94" | 0.23" | #10 | 1.76" | 1.70" | 0.44" | 1,200 | 0.13 | POLYBAG | 1 | 50 | 300 | 791506057642 |
| S3712-0002 | 1.48" | 0.69" | 0.31" | 1.25" | 0.32" | 1/4" | 2.28" | 2.28" | 0.50" | 2,000 | 0.25 | POLYBAG | 1 | 20 | 200 | 791506057659 |
| S3712-0003 | 1.95" | 0.84" | 0.38" | 1.63" | 0.41" | 3/8" | 3.00" | 2.90" | 0.74" | 4,000 | 0.60 | POLYBAG | 1 | 20 | 100 | 791506057666 |

NOTE:

**"D" RING IS FORGED 316 STAINLESS AND HOLDING PAD BODY IS PRECISION CAST 316.
ALL DIMENSIONS ARE NOMINAL (+/- 3%) AND ARE SUBJECT TO CHANGE WITHOUT NOTICE.**