

PULLPRO™

**NEW
PRODUCT**

Manufactured by



PREMIUM STAINLESS STEEL SHEAVES

WEIGHT OPTIMIZED

Recessed sides with lightening holes for weight optimized design.

LoLOAD & HiLOAD

HiLOAD indicates a premium, larger diameter sheave suitable for 180° rope turns.

LoLOAD indicates a smaller diameter sheave designed for economical small deflection turns less than 90°.

THROAT ANGLE & GROOVE DIAMETER

Wide sheave grooves provide a proper throat angle to permit slight rope lead misalignment without damaging the rope or wearing the sheave groove. An optimal sheave groove clearance suited for each rope size ensures a maximized lifespan for the rope and sheave.

BRONZE BUSHING

Lead free, oil impregnated bronze bushings for high load, slow turning applications. Designed with thicker walls to support side load and wear while reducing friction.

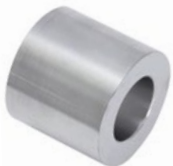
STAINLESS STEEL BALL BEARINGS

440C hardened stainless steel balls and rings with a full complement ball bearing race to support high static loads. Packed with water resistant grease to ensure consistent and smooth operation and a removable Teflon ring to prevent dust and debris from entering the cavity.

PULLPRO™ premium stainless steel sheaves are:

- Designed to address an industry need for versatile, safe, robust and long-lasting sheaves to meet today's demanding applications.
- Available for fibrous or wire rope and feature either stainless steel bearing or bronze bushing type hub styles.
- Comprised of high quality grade 316 stainless steel and incorporate a weight optimized design.
- Designed with versatility as a key feature. The inclusion of CNC precision machined spacers allows a standard sheave to adapt to various shaft sizes.
- Certified through extensive in-house laboratory testing. The WLL represents a 5:1 design factor, and when used appropriately, the sheaves meet ASME B30.26-2610 and exceed the minimum 4:1 design factor.

CNC Precision Machined Spacers



- Included with most bushing style sheaves
- Allows a standard sheave to adapt to multiple shaft sizes
- Outside is polished for smooth contact on the bronze bushing



ROPE SHEAVE, BUSHING
316 STAINLESS STEEL / BRONZE



ITEM	FIBROUS ROPE SIZE	OD	ID	SPACER (part #)	WLL (lb)
S0414-1207*	3/8"-7/16"	2.00"	0.25"	P0414-SPC02	1,000
S0414-1210	3/8"-7/16"	2.00"	0.38"	N/A	1,000
S0414-1308*	1/2"	2.50"	0.31"	P0414-SPC08	1,500
S0414-1310*	1/2"	2.50"	0.38"	P0414-SPC03	1,500
S0414-1313*	1/2"	2.50"	0.50"	P0414-SPC07	1,500
S0414-1316	1/2"	2.50"	0.63"	N/A	1,500
S0414-1613*	5/8"	3.13"	0.50"	P0414-SPC04	3,000
S0414-1616*	5/8"	3.13"	0.63"	P0414-SPC10	3,000
S0414-1620*	5/8"	3.13"	0.75"	P0414-SPC09	3,000
S0414-1622	5/8"	3.13"	0.88"	N/A	3,000
S0414-2016*	3/4"	3.75"	0.63"	P0414-SPC05	4,000
S0414-2020*	3/4"	3.75"	0.75"	P0414-SPC12	4,000
S0414-2022*	3/4"	3.75"	0.88"	P0414-SPC11	4,000
S0414-2028	3/4"	3.75"	1.13"	N/A	4,000
S0414-2520*	1"	5.00"	0.75"	P0414-SPC06	5,500
S0414-2522*	1"	5.00"	0.88"	P0414-SPC14	5,500
S0414-2525*	1"	5.00"	1.00"	P0414-SPC13	5,500
S0414-2532	1"	5.00"	1.25"	N/A	5,500

*INCLUDES SPACER



ROPE SHEAVE, BEARING
316 STAINLESS STEEL



ITEM	FIBROUS ROPE SIZE	OD	ID	WLL (lb)
S0415-1207	3/8"-7/16"	2.00"	0.25"	1,000
S0415-1310	1/2"	2.50"	0.38"	1,500
S0415-1613	5/8"	3.13"	0.50"	3,000
S0415-2016	3/4"	3.75"	0.63"	4,000
S0415-2520	1"	5.00"	0.75"	5,500



LoLOAD WIRE ROPE SHEAVE, BUSHING
316 STAINLESS STEEL / BRONZE



ITEM	WIRE SIZE	OD	ID	SPACER (part #)	WLL (lb)
S0416-0507*	3/16"	2.00"	0.25"	P0414-SPC02	1,000
S0416-0510	3/16"	2.00"	0.38"	N/A	1,000
S0416-0710*	1/4"	2.50"	0.38"	P0414-SPC03	1,500
S0416-0713*	1/4"	2.50"	0.50"	P0414-SPC07	1,500
S0416-0716	1/4"	2.50"	0.63"	N/A	1,500
S0416-0813*	5/16"	3.13"	0.50"	P0414-SPC04	2,000
S0416-0816*	5/16"	3.13"	0.63"	P0414-SPC10	2,000
S0416-0820*	5/16"	3.13"	0.75"	P0414-SPC09	2,000
S0416-0822	5/16"	3.13"	0.88"	N/A	2,000
S0416-1013*	3/8"	4.00"	0.50"	P0414-SPC04	3,000
S0416-1016*	3/8"	4.00"	0.63"	P0414-SPC10	3,000
S0416-1020*	3/8"	4.00"	0.75"	P0414-SPC09	3,000
S0416-1022	3/8"	4.00"	0.88"	N/A	3,000

*INCLUDES SPACER



LoLOAD WIRE ROPE SHEAVE, BEARING
316 STAINLESS STEEL



ITEM	WIRE SIZE	OD	ID	WLL (lb)
S0417-0507	3/16"	2.00"	0.25"	1,000
S0417-0710	1/4"	2.50"	0.38"	1,500
S0417-0813	5/16"	3.13"	0.50"	2,000
S0417-1013	3/8"	4.00"	0.50"	3,000



HiLOAD WIRE ROPE SHEAVE, BUSHING
316 STAINLESS STEEL / BRONZE



ITEM	WIRE SIZE	OD	ID	SPACER (part #)	WLL (lb)
S0418-0307*	1/8"	2.00"	0.25"	P0414-SPC01	500
S0418-0310	1/8"	2.00"	0.38"	N/A	500
S0418-0510*	3/16"	3.00"	0.38"	P0414-SPC03	1,500
S0418-0513*	3/16"	3.00"	0.50"	P0414-SPC07	1,500
S0418-0516	3/16"	3.00"	0.63"	N/A	1,500
S0418-0713*	1/4"	4.00"	0.50"	P0414-SPC04	2,000
S0418-0716*	1/4"	4.00"	0.63"	P0414-SPC10	2,000
S0418-0720*	1/4"	4.00"	0.75"	P0414-SPC09	2,000
S0418-0722	1/4"	4.00"	0.88"	N/A	2,000
S0418-0813*	5/16"	5.00"	0.50"	P0414-SPC04	3,000
S0418-0816*	5/16"	5.00"	0.63"	P0414-SPC10	3,000
S0418-0820*	5/16"	5.00"	0.75"	P0414-SPC09	3,000
S0418-0822	5/16"	5.00"	0.88"	N/A	3,000
S0418-1016*	3/8"	6.00"	0.63"	P0414-SPC05	4,000
S0418-1020*	3/8"	6.00"	0.75"	P0414-SPC12	4,000
S0418-1022*	3/8"	6.00"	0.88"	P0414-SPC11	4,000
S0418-1028	3/8"	6.00"	1.13"	N/A	4,000

*INCLUDES SPACER



HiLOAD WIRE ROPE SHEAVE, BEARING
316 STAINLESS STEEL



ITEM	WIRE SIZE	OD	ID	WLL (lb)
S0419-0307	1/8"	2.00"	0.25"	500
S0419-0510	3/16"	3.00"	0.38"	1,500
S0419-0713	1/4"	4.00"	0.50"	2,000
S0419-0813	5/16"	5.00"	0.50"	3,000
S0419-1016	3/8"	6.00"	0.63"	4,000

NOTE: ALL DIMENSIONS ARE NOMINAL (+/- 3%) AND ARE SUBJECT TO CHANGE WITHOUT NOTICE.