

HEAVY DUTY FOLDING PAD EYE

316 STAINLESS STEEL



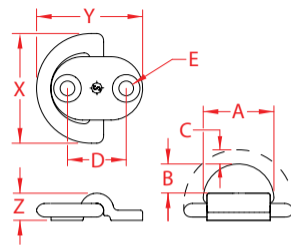
Import



Drop
Forged



Suncor
Exclusive



ITEM	A	B	C	D	E	FASTENER	X (height)	Y (length)	Z (width)	WLL (lb)	WT (lb)	PACKAGING TYPE	EACH (qty)	INNER (qty)	CARTON (qty)	UPC
S3712-0001	1.10"	0.50"	0.25"	0.94"	0.23"	#10	1.76"	1.70"	0.44"	1,200	0.13	POLYBAG	1	50	300	791506057642
S3712-0002	1.48"	0.69"	0.31"	1.25"	0.32"	#20	2.28"	2.28"	0.50"	2,000	0.25	POLYBAG	1	20	200	791506057659
S3712-0003	1.95"	0.84"	0.38"	1.63"	0.41"	3/8"	3.00"	2.90"	0.74"	4,000	0.60	POLYBAG	1	20	100	791506057666

NOTE:

**"D" RING IS FORGED 316 STAINLESS AND HOLDING PAD BODY IS PRECISION CAST 316.
ALL DIMENSIONS ARE NOMINAL (+/- 3%) AND ARE SUBJECT TO CHANGE WITHOUT NOTICE.**