

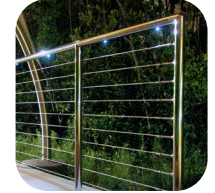
microstar™ LIGHTING ORDERING GUIDE

5 STEPS TO LOW MAINTENANCE ACCENT LIGHTING

- 1) Visualize the project by creating a simple layout
- 2) Decide how many lights and which type are desired and where they will be located
- 3) Calculate your power source requirements
- 4) Measure the wall thickness of your post material
- 5) Complete the order sheet below

MICRO STAR™ LIGHTING ORDERING SHEET

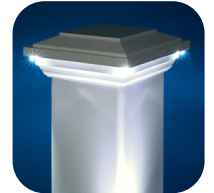
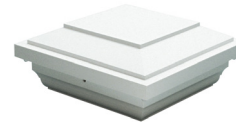
PART NUMBER	DESCRIPTION	QUANTITY
LED LIGHTING		
S0801-PC01	Micro Star™ LED Light - White	
S0803-1000	Tri Star Surface Mount Light - White	
S0985-0000	Micro Star™ LED Post Cap - White	
S0825-0018-BK	Micro Star™ LED Light Bar, 18" - Black	
S0825-0018-BZ	Micro Star™ LED Light Bar, 18" - Bronze	
S0825-0018-MT	Micro Star™ LED Light Bar, 18" - Metallic Silver	
S0825-0018-WH	Micro Star™ LED Light Bar, 18" - White	
S0825-0030-BK	Micro Star™ LED Light Bar, 30" - Black	
S0825-0030-BZ	Micro Star™ LED Light Bar, 30" - Bronze	
S0825-0030-MT	Micro Star™ LED Light Bar, 30" - Metallic Silver	
S0825-0030-WH	Micro Star™ LED Light Bar, 30" - White	
S0825-0042-BK	Micro Star™ LED Light Bar, 42" - Black	
S0825-0042-BZ	Micro Star™ LED Light Bar, 42" - Bronze	
S0825-0042-MT	Micro Star™ LED Light Bar, 42" - Metallic Silver	
S0825-0042-WH	Micro Star™ LED Light Bar, 42" - White	
TRANSFORMER & WIRING HARNESS ASSEMBLIES		
S0832-0005	Micro Star™ Transformer - 5 Amp	
S0825-TW560	Micro Star™ Transformer Wiring Harness - 5 Amp Female	
S0825-JMPR-SC	Micro Star™ Jumper - 12"	
S0825-EX60-PT	Micro Star™ Extension, 5' - Push Connectors	
S0825-EX60-SC	Micro Star™ Extension, 5' - Screw Connectors	
S0825-EX300-SC	Micro Star™ Extension, 25' - Screw Connectors	
S0825-JF08-SC	Micro Star™ Extension Wiring, 8" - Screw Connector, Female	
S0825-FM08-SC	Micro Star™ Extension Wiring, 8" - Screw Connector, Male	
S0825-JF12-PT	Micro Star™ Extension Wiring, 12" - Push Connector, Female	
S0825-JM12-PT	Micro Star™ Extension Wiring, 12" - Push Connector, Male	
S0825-H048	Micro Star™ Wire Harness - 4' Handrail	
S0825-H060	Micro Star™ Wire Harness - 5' Handrail	
S0825-3000-SC	Micro Star™ 3-Way Branch - Screw Connectors	
S0825-3000-PT	Micro Star™ 3-Way Branch - Push Connectors	
MICRO STAR™ LED LIGHT & WIRING HARNESS GROMMETS		
S0801-GR0701-10	Micro Star™ Grommet, 3/8" ID & 1/16" thick - 10 pack	
S0801-GR0703-10	Micro Star™ Grommet, 7/16" ID & 1/8" thick - 10 pack	
S0801-GR0705-10	Micro Star™ Grommet, 7/16" ID & 3/16" thick - 10 pack	
S0801-GR0707-10	Micro Star™ Grommet, 7/16" ID & 1/4" thick - 10 pack	
S0825-GR1201-10	Wiring Harness Grommet, 9/16" ID & 1/16" thick - 10 pack	
S0825-GR1203-10	Wiring Harness Grommet, 9/16" ID & 1/8" thick - 10 pack	
S0825-GR1205-10	Wiring Harness Grommet, 11/16" ID & 3/16" thick - 10 pack	
S0825-GR1207-10	Wiring Harness Grommet, 11/16" ID & 1/4" thick - 10 pack	



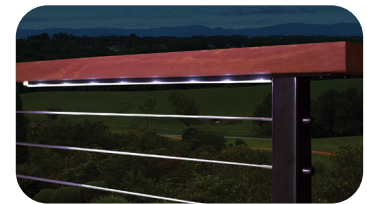
Micro Star™ LED Light



Tri Star Surface Mount Light



Micro Star™ LED Post Cap



Micro Star™ LED Light Bar



Screw Connector Male



Push Connector Male



Screw Connector Female



Push Connector Female

Micro Star™ Wiring Harness Assemblies

NEW! Micro Star™ wiring harness assemblies for easy insulated installation with a twist or a click. Allows servicing without disassembly.

MICRO STAR™ TRANSFORMER CALCULATOR

Micro Star™ LED Lights require a 12V DC (Direct Current) transformer. Atlantis Rail provides a 5 Amp transformer with all Micro Star™ lighting applications. More than one transformer may be required for any given project. The transformer requirement is sized by calculating each lighting component as a % of the maximum capacity per transformer and averaging the calculations. Average calculations of 80% capacity or more require an additional transformer to guarantee full functionality of the lights. These calculations may illustrate the need for multiple transformers.

For example: An "Average of % of Max. Capacity" calculation of 200% would average at $200 / 80 = 2.5$ and require 3 transformers.

TRANSFORMER CALCULATOR				
CALCULATION COMPONENT	MAX. CAPACITY (MC)	NUMBER REQUIRED (NR)	% OF MAX. CAPACITY*	COMPONENTS USED (YES/NO)
Total Linear Footage of Project	100 ft			YES
Micro Star™ LED Light (S0801-PC01)	100			
Micro Star™ LED Post Cap (S0985-0000)	40			
Tri Star Surface Mount Light (S0803-1000)	40			
Micro Star™ LED Light Bar, 18" (S0825-0018-XX)**	50			
Micro Star™ LED Light Bar, 30" (S0825-0030-XX)**	25			
Micro Star™ LED Light Bar, 42" (S0825-0042-XX)**	18			
Total % of Max. Capacity:				
Average of % of Max. Capacity***				
Number of Transformers Required****				

* To get "% of Max. Capacity", use the following formula: $(NR/MC) \times 100$ and round up to the nearest whole number.

** NOTE: "XX" in the part number is the color designation. Replace with "BK" for Black, "BZ" for Bronze, "MT" for Metallic Silver, and "WH" for White.

*** Divide the Number you get for the "Total % of Max. Capacity" by the number of "Yes" for "Components Used" on the project and round up to the nearest whole number.

****To find the number of transformers required, divide the "Average of % of Max. Capacity" by 80 and round up to the nearest whole number.

MICRO STAR™ TRANSFORMER & WIRING HARNESS		
PART NUMBER	DESCRIPTION	QUANTITY
S0832-0005	Micro Star™ Transformer - 5 Amp	
S0825-TW560	Micro Star™ Transformer Wiring Harness - 5 Amp Female	

MICRO STAR™ LIGHTING/WIRING HARNESS LAYOUT

WIRING HARNESSES & JUMPERS FOR MICRO STAR™ LED LIGHTS				
PART NUMBER	DESCRIPTION	# OF LIGHTS PER RAIL SECTION	# OF RAIL SECTIONS	TOTAL # OF LIGHTS
S0825-H048	Micro Star™ Wire Harness - 4' Handrail (2 LED Lights)	2		
S0825-H060	Micro Star™ Wire Harness - 5' Handrail (3 LED Lights)	3		
Total # of Micro Star™ LED Lights (S0801-PC01) Needed:				
Total # of Micro Star™ Jumpers (S0825-JMPR-SC) Needed*:				

* The number of jumpers needed usually equals the number of wiring harnesses used.

EXTENSION WIRING FOR MICRO STAR™ LED POST CAPS		
PART NUMBER	DESCRIPTION	QUANTITY
S0825-JF08-SC*	Micro Star™ Extension Wiring, 8" - Screw Connector, Female	
S0825-JM08-SC*	Micro Star™ Extension Wiring, 8" - Screw Connector, Male	

*Caps require a S025-JM08-SC in and S0825-JF08-SC out to wire and connect to the next cap.

EXTENSIONS & JUMPERS FOR MICRO STAR™ LED LIGHT BARS		
PART NUMBER	DESCRIPTION	QUANTITY
S0825-JMPR-SC	Micro Star™ Jumper - 12"	
S0825-EX60-SC	Micro Star™ Extension, 5' - Screw Connectors	
S0825-EX300-SC	Micro Star™ Extension, 25' - Screw Connectors	

OTHER MICRO STAR™ WIRING HARNESS ASSEMBLIES		
PART NUMBER	DESCRIPTION	QUANTITY



www.suncorstainless.com
sales@suncorstainless.com



www.atlantisrail.com
info@atlantisrail.com