

QUICK ATTACH™ JAW

316 STAINLESS STEEL



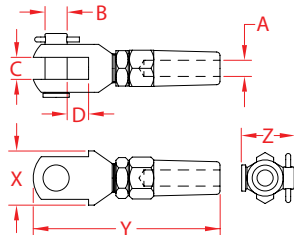
Import



Precision
Machined



Suncor
Exclusive



ITEM	A (wire size)	B	C	D	X (height)	Y (length)	Z (width)	WT (lb)	PACKAGING TYPE	EACH (qty)	INNER (qty)	CARTON (qty)	UPC
S0762-0003	1/8"	0.24"	0.24"	0.34"	0.60"	2.40"	0.87"	0.11	POLYBAG	1	10	200	791506051138
S0762-0004	5/32"	0.31"	0.31"	0.31"	0.84"	2.87"	1.10"	0.19	POLYBAG	1	5	175	791506051145
S0762-0005	3/16"	0.39"	0.39"	0.39"	0.96"	3.31"	1.22"	0.31	POLYBAG	1	10	100	791506051152
S0762-0007	1/4"	0.46"	0.46"	0.46"	1.19"	3.78"	1.47"	0.45	POLYBAG	1	1	75	791506051169
S0762-0009	5/16"	0.55"	0.55"	0.55"	1.33"	4.65"	1.62"	0.79	POLYBAG	1	1	25	791506051176
S0762-0010	3/8"	0.63"	0.63"	0.63"	1.57"	5.40"	1.88"	1.34	POLYBAG	1	1	25	791506051183
S0762-0013	1/2"	0.74"	0.74"	0.74"	1.88"	6.50"	2.20"	2.15	POLYBAG	1	1	15	791506051190

NOTE:
MECHANICAL SWAGE FITTING ALLOWS VERY FAST ATTACHMENT TO ANY TYPE OF CABLE (1X19, 7X19, OR 7X7) USING ONLY SIMPLE TOOLS.
WORKING LOAD LIMIT OF QUICK ATTACH™ FITTINGS ARE 75% OF THE WLL OF WIRE USED.
ALL DIMENSIONS ARE NOMINAL (+/- 3%) AND ARE SUBJECT TO CHANGE WITHOUT NOTICE.