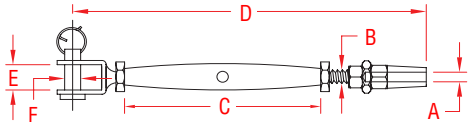


QUICK ATTACH™ STUD & JAW

316 STAINLESS STEEL



ITEM	A	B	C	D	E	F	WT
	(wire size)	(thread)					(lb)
S0765-0703	1/8"	1/4"	4.20"	7.00"	0.36"	0.23"	0.24
S0765-0704	5/32"	1/4"	4.20"	7.25"	0.36"	0.23"	0.26
S0765-0904	5/32"	5/16"	4.40"	7.52"	0.38"	0.31"	0.36
S0765-0905	3/16"	5/16"	4.40"	7.84"	0.38"	0.31"	0.42
S0765-1005	3/16"	3/8"	4.90"	8.86"	0.49"	0.37"	0.60
S0765-1007	1/4"	3/8"	4.90"	9.25"	0.49"	0.37"	0.71
S0765-1307	1/4"	1/2"	5.98"	10.81"	0.62"	0.48"	1.16
S0765-1309	5/16"	1/2"	5.98"	11.42"	0.62"	0.48"	1.36
S0765-1610	3/8"	5/8"	7.66"	14.51"	0.77"	0.63"	2.50

NOTE: MECHANICAL SWAGE FITTING ALLOWS VERY FAST ATTACHMENT TO ANY TYPE OF CABLE (1X19, 7X19, OR 7X7) USING ONLY SIMPLE TOOLS. WORKING LOAD LIMIT OF QUICK ATTACH™ FITTINGS ARE 75% OF THE WLL OF WIRE USED.