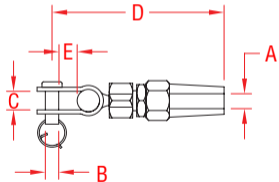


# QUICK ATTACH™ TOGGLE

316 STAINLESS STEEL



ITEM	A	B	C	D	E	WT
------	---	---	---	---	---	----

(wire size)

(lb)

S0778-0703	1/8"	0.23"	0.35"	2.53"	0.45"	0.12
S0778-0704	5/32"	0.23"	0.35"	2.75"	0.45"	0.14
S0778-0904	5/32"	0.31"	0.45"	2.98"	0.60"	0.20
S0778-0905	3/16"	0.31"	0.45"	3.14"	0.60"	0.26
S0778-1007	1/4"	0.37"	0.56"	4.19"	0.75"	0.42
S0778-1309	5/16"	0.47"	0.70"	5.15"	0.72"	0.76

**NOTE:**  
**MECHANICAL SWAGE FITTING ALLOWS SELF-ALIGNING FOR A MORE FLEXIBLE CONNECTION SUCH AS BOAT LIFELINES OR ARCHITECTURAL APPLICATIONS. VERY FAST AND SIMPLE ATTACHMENT TO CABLE (1X19, 7X19, OR 7X7). WORKING LOAD LIMIT OF QUICK ATTACH™ FITTINGS ARE 75% OF THE WLL OF WIRE USED.**