

# SURFACE MOUNT BLOCK (WIRE)

## 304/316 STAINLESS STEEL



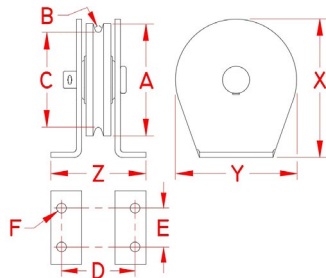
Import



Precision  
Cast



Suncor  
Exclusive



ITEM	A	B (wire size)	C	D	E	F (fastener)	X (height)	Y (length)	Z (width)	WLL (lb)	WT (lb)	SHEAVE	TYPE	PACKAGING TYPE	EACH (qty)	INNER (qty)	CARTON (qty)	UPC
S0420-0050-W	2.25"	3/32" + 1/8"	1.88"	1.72"	0.88"	3/16"	2.75"	2.50"	2.20"	1,000	0.96	S0412-0310	TYPE "L"	POLYBAG	1	1	25	791506044574
S0420-0075-W	3.25"	3/16"	2.75"	2.20"	1.12"	1/4"	4.00"	3.50"	2.85"	1,500	2.10	S0412-0513	TYPE "L"	POLYBAG	1	1	25	791506044598
S0420-0100-W	4.25"	1/4"	3.50"	2.55"	1.50"	3/8"	5.25"	4.50"	3.35"	3,000	4.18	S0412-0716	TYPE "L"	POLYBAG	1	1	10	791506044611

**NOTE: SHEAVE IS PRECISION CAST AND FITTED WITH BRONZE BUSH. REMOVABLE SHEAVE.  
REFERENCE "FASTENER MATCHING CHART" FOR COMPATIBLE FASTENERS.  
ALL DIMENSIONS ARE NOMINAL (+/- 3%) AND ARE SUBJECT TO CHANGE WITHOUT NOTICE.**