

LASHING RING, BENT - "WELD-ON"

316 STAINLESS STEEL



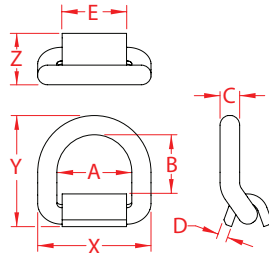
Import



Drop Forged



New Product



ITEM	SIZE	A	B	C	D	E	X (height)	Y (length)	Z (width)	WLL (lb)	WT (lb)	PACKAGING TYPE	EACH (qty)	INNER (qty)	CARTON (qty)	UPC
S3722-BN13	1/2"	2.34"	1.95"	0.52"	0.30"	1.96"	3.38"	3.47"	1.38"	*3,000	1.00	POLYBAG	1	1	25	791506097099
S3722-BN16	5/8"	2.94"	2.35"	0.70"	0.38"	2.56"	4.34"	4.28"	1.75"	*4,500	2.20	POLYBAG	1	1	20	791506097105
S3722-BN20	3/4"	2.98"	2.35"	0.76"	0.38"	2.56"	4.51"	4.41"	1.89"	*6,500	2.56	POLYBAG	1	1	10	791506097112
S3722-BN25	1"	3.00"	2.25"	1.02"	0.52"	2.56"	5.03"	4.85"	2.14"	*8,500	4.59	POLYBAG	1	1	5	791506097129

NOTE:

***WORKING LOAD LIMIT DEPENDS ON THE QUALITY OF THE WELD ATTACHING THE BASE.
ALL DIMENSIONS ARE NOMINAL (+/- 3%) AND ARE SUBJECT TO CHANGE WITHOUT NOTICE.**