

TOGGLE TERMINAL, HAND SWAGE

316 STAINLESS STEEL



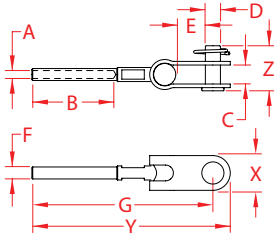
Import



Precision
Machined



Stamped



ITEM	A (wire)	B	C	D	E	F	G	X (height)	Y (length)	Z (width)	WT (lb)	PACKAGING TYPE	EACH (qty)	INNER (qty)	CARTON (qty)	UPC
S0737-H003	1/8"	1.51"	0.38"	0.24"	0.45"	0.21"	3.13"	0.59"	3.40"	0.82"	0.07	POLYBAG	1	25	500	791506050100
S0737-H005	3/16"	2.01"	0.38"	0.24"	0.45"	0.30"	3.80"	0.59"	3.96"	0.82"	0.10	POLYBAG	1	25	350	791506050117

NOTE:
DESIGNED FOR HAND SWAGE USE ONLY. MAKE INSTALLATION PAINLESS, USING SUNCOR'S HAND SWAGE LINE OF FITTINGS. THIS TOGGLE IS PERFECT FOR NUMEROUS MARINE, INDUSTRIAL AND ARCHITECTURALAPPLICATIONS. TOGGLE AND SWAGE FITTING ARE MADE FROM GRADE 316 STAINLESS STEEL. CRIMP THE HAND SWAGE STUDS ONTO THE WIRE ROPE USING THE HAND SWAGER (PART # E0113-H600). USE HAND SWAGER HOLE #1 ON 1/8" WIRE AND HOLE #2 ON 3/16" WIRE. ALL DIMENSIONS ARE NOMINAL (+/- 3%) AND ARE SUBJECT TO CHANGE WITHOUT NOTICE.