

# TURNBUCKLE BODY - CLOSED

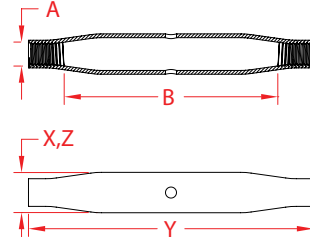
## 316 STAINLESS STEEL



Import



Precision  
Machined



ITEM	A (size)	B (adjustment)	WLL (lb)	X (height)	Y (length)	Z (width)	WT (lb)	PACKAGING TYPE	EACH (qty)	INNER (qty)	CARTON (qty)	UPC
<b>UNC THREAD</b>												
P0101-BD05	3/16"	3.00"	300	0.31"	3.65"	0.31"	0.06	POLYBAG	1	50	1000	791506019657
P0101-BD07	1/4"	3.50"	440	0.39"	4.22"	0.39"	0.07	POLYBAG	1	50	600	791506019664
P0101-BD08	5/16"	3.50"	800	0.54"	4.42"	0.54"	0.14	POLYBAG	1	25	300	791506019671
P0101-BD10	3/8"	3.50"	1,200	0.67"	4.75"	0.67"	0.19	POLYBAG	1	10	200	791506019688
P0101-BD13	1/2"	4.75"	2,200	0.79"	6.10"	0.79"	0.28	POLYBAG	1	10	100	791506019695
<b>UNF THREAD</b>												
P0780-BD05	3/16"	3.00"	300	0.39"	3.65"	0.39"	0.06	POLYBAG	1	50	700	791506025924
P0780-BD07	1/4"	3.50"	440	0.39"	4.22"	0.39"	0.07	POLYBAG	1	50	600	791506025931
P0780-BD09	5/16"	3.50"	800	0.54"	4.42"	0.54"	0.14	POLYBAG	1	25	300	791506025948
P0780-BD10	3/8"	3.50"	1,200	0.67"	4.75"	0.67"	0.19	POLYBAG	1	10	200	791506025955
P0780-BD13	1/2"	4.75"	2,200	0.79"	6.10"	0.79"	0.28	POLYBAG	1	10	100	791506025962
P0780-BD16	5/8"	5.50"	2,800	1.08"	7.53"	1.08"	0.68	POLYBAG	1	5	50	791506025979
P0780-BD20	3/4"	7.00"	3,500	1.32"	8.70"	1.32"	1.45	POLYBAG	1	5	25	791506025986

**NOTE:**  
**MULTIPLE CONFIGURATIONS AVAILABLE FOR USE WITH THIS BODY.**  
**ALL DIMENSIONS ARE NOMINAL (+/- 3%) AND ARE SUBJECT TO CHANGE WITHOUT NOTICE.**