

YOKE END THREADED, LEFT HAND, METRIC 316-NM STAINLESS STEEL



Import



Drop
Forged



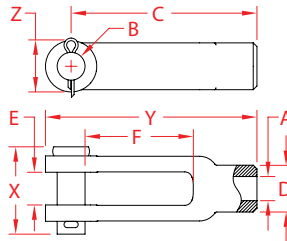
Precision
Machined



Load
Rated



Suncor
Exclusive



ITEM	A (size)	B	C	D	E	F	X (height)	Y (length)	Z (width)	WLL (lb)	WT (lb)	PACKAGING TYPE	EACH (qty)	INNER (qty)	CARTON (qty)	UPC
S0113-LM05	5 MM	0.19"	1.56"	0.31"	0.19"	0.90"	0.66"	1.75"	0.38"	300	0.04	POLYBAG	1	10	500	791506098386
S0113-LM06	6 MM	0.25"	2.00"	0.44"	0.28"	1.12"	0.90"	2.25"	0.50"	500	0.10	POLYBAG	1	25	400	791506098362
S0113-LM08	8 MM	0.31"	2.25"	0.50"	0.34"	1.29"	1.09"	2.55"	0.59"	800	0.14	POLYBAG	1	25	200	791506098348
S0113-LM10	10 MM	0.38"	2.50"	0.63"	0.44"	1.45"	1.29"	2.85"	0.69"	1,200	0.24	POLYBAG	1	10	150	791506098324
S0113-LM12	12 MM	0.45"	3.00"	0.86"	0.56"	1.65"	1.56"	3.51"	1.01"	1,700	0.50	POLYBAG	1	10	80	791506098300
S0113-LM16	16 MM	0.64"	4.94"	1.06"	0.69"	3.37"	1.89"	5.54"	1.19"	3,500	1.14	POLYBAG	1	1	30	791506098287
S0113-LM18	18 MM	0.75"	6.06"	1.25"	0.81"	4.18"	2.23"	6.78"	1.44"	5,200	2.06	POLYBAG	1	1	20	791506098263
S0113-LM24	24 MM	1.00"	8.00"	1.63"	1.06"	5.50"	2.97"	8.97"	1.94"	8,000	4.32	POLYBAG	1	1	8	791506098249

NOTE:
SOLD WITH CLEVIS PINS.
ALL DIMENSIONS ARE NOMINAL (+/- 3%) AND ARE SUBJECT TO CHANGE WITHOUT NOTICE.