



# FORGED GRAB & SLIP HOOKS

GRADE 316 STAINLESS

Industrial Strength Hook Series Designed for Load Pulling Applications

**NEW  
PRODUCT**

## FORGED 316 STAINLESS

Grab & slip hook assemblies are crafted from marine grade 316 steel, renowned for its exceptional durability and corrosion resistance properties.

## HOOK TYPES

Choose from two hook types. Grab Hooks for chain and Slip Hooks for synthetic slings/rope.

## VERSATILITY

Variety of hook types, mounting options and working load limits to meet the requirements of many demanding applications.

## CHAIN SIZES

Grab hooks accommodate a chain size range of 1/4" - 1/2". Suncor sells a wide range of USA made and import chain types & sizes.

## MOUNTING OPTIONS

Choose from two mounting options; Bolt-On or Weld-On.

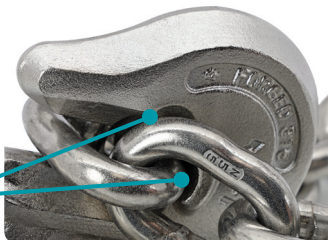
## Suncor Stainless® Forged Grab & Slip Hooks

- Forged Grab & Slip Hooks are designed to handle heavy loads reliably, ensuring workplace safety and operational efficiency.
- Grab & Slip Hooks work with the load restraints and rigging assemblies to hold and pull loads. With a full range of hook types, mounting options, and working load limits, Suncor offers a versatile line of hooks that will meet the requirements of many applications.
- Made from marine grade 316 stainless steel for optimal strength with an electropolish finish for best corrosion resistance ensuring durable service for harsh conditions.
- Each variant of the Grab & Slip Hooks adheres rigorously to established working load limits and feature a 4:1 safety factor. Grab Hooks support a WLL ranging from 2,200 lbs. to 7,300 lbs. (998 kg – 3,311 kg), and Slip Hooks support a WLL ranging from 1,500 lbs. to 4,000 lbs. (680 kg – 1,814 kg).
- Ideal for rigging operations in construction to material handling in manufacturing facilities, hooks serve as foundational tools enabling efficient workflow and operational productivity.

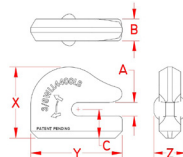
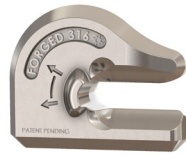
## PATENT PENDING GRAB HOOK DESIGN

Suncor's new patent pending Grab Hook has multiple features for improved performance, a new design with wider landing that supports the chain link and reduces premature damage.

**FULL CHAIN LINK  
SUPPORT**



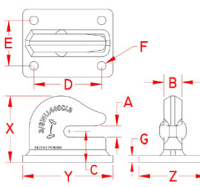
## GRAB HOOK - WELD ON 316 STAINLESS STEEL



ITEM	CHAIN SIZE	A	B	C	WLL (lb)	X (height)	Y (length)	Z (width)	WT (lb)
S0459-G007	1/4"	0.34"	0.50"	0.67"	*2,200	1.65"	2.28"	0.76"	0.33
S0459-G008	5/16"	0.39"	0.63"	0.87"	*2,700	1.92"	2.50"	0.90"	0.55
S0459-G010	3/8"	0.50"	0.80"	1.06"	*4,400	2.63"	3.38"	1.18"	1.31
S0459-G013	1/2"	0.63"	1.05"	1.31"	*7,300	3.44"	4.38"	1.51"	2.90

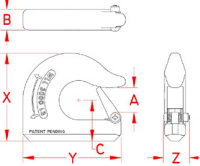
**NOTE: \*WORKING LOAD LIMIT DEPENDS ON THE QUALITY OF THE WELD ATTACHING THE BASE.**

## GRAB HOOK - BOLT ON 316 STAINLESS STEEL



ITEM	CHAIN SIZE	A	B	C	D	E	F	G	WLL (lb)	X (height)	Y (length)	Z (width)	WT (lb)
S0459-GB07	1/4"	0.34"	0.50"	0.91"	2.00"	1.63"	0.32"	0.24"	2,200	1.89"	2.88"	2.50"	0.82
S0459-GB08	5/16"	0.39"	0.63"	1.18"	2.50"	1.75"	0.39"	0.31"	2,700	2.23"	3.50"	2.75"	1.39
S0459-GB10	3/8"	0.50"	0.80"	1.37"	3.00"	2.00"	0.39"	0.31"	4,400	2.94"	4.00"	3.00"	2.42
S0459-GB13	1/2"	0.63"	1.05"	1.70"	3.38"	2.50"	0.52"	0.39"	7,300	3.83"	4.88"	3.75"	4.96

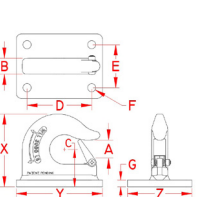
## SLIP HOOK - WELD ON 316 STAINLESS STEEL



ITEM	A	B	C	WLL (lb)	X (height)	Y (length)	Z (width)	WT (lb)
S0459-S007	0.60"	0.56"	1.08"	*1,500	2.37"	2.65"	0.71"	0.49
S0459-S008	0.72"	0.66"	1.20"	*2,000	2.65"	3.03"	0.71"	0.76
S0459-S010	0.85"	0.74"	1.42"	*3,000	3.07"	3.44"	0.79"	1.12
S0459-S013	1.01"	0.96"	1.64"	*4,000	3.74"	4.33"	0.79"	2.13

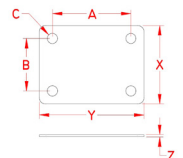
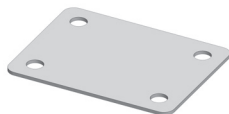
**NOTE: \*WORKING LOAD LIMIT DEPENDS ON THE QUALITY OF THE WELD ATTACHING THE BASE.**

## SLIP HOOK - BOLT ON 316 STAINLESS STEEL



ITEM	A	B	C	D	E	F	G	WLL (lb)	X (height)	Y (length)	Z (width)	WT (lb)
S0459-SB07	0.60"	0.56"	1.32"	2.00"	1.63"	0.32"	0.24"	1,500	2.61"	2.88"	2.50"	0.97
S0459-SB08	0.72"	0.66"	1.51"	2.50"	1.75"	0.39"	0.31"	2,000	2.96"	3.50"	2.75"	1.59
S0459-SB10	0.85"	0.74"	1.73"	3.00"	2.00"	0.39"	0.31"	3,000	3.38"	4.00"	3.00"	2.20
S0459-SB13	1.01"	0.96"	2.03"	3.38"	2.50"	0.52"	0.39"	4,000	4.13"	4.88"	3.75"	4.20

## UNIVERSAL BACKING PLATE 304 STAINLESS STEEL



ITEM	A	B	C	X (height)	Y (length)	Z (width)	WT (lb)
S0459-UB07	2.00"	1.63"	0.32"	2.50"	2.88"	0.08"	0.15
S0459-UB08	2.50"	1.75"	0.39"	2.75"	3.50"	0.08"	0.20
S0459-UB10	3.00"	2.00"	0.39"	3.00"	4.00"	0.08"	0.23
S0459-UB13	3.38"	2.50"	0.52"	3.75"	4.88"	0.12"	0.59

**NOTE: ALL DIMENSIONS ARE NOMINAL (+/- 3%) AND ARE SUBJECT TO CHANGE WITHOUT NOTICE.**